



Product Datasheet

EZ-Go2



The EZ-Go2 is a high power outdoor 250mW wireless Client Bridge / Router system operating in the 2.4GHz unlicensed frequency spectrum providing real world thrupt up to 15 Mb/sec. It complies with the 802.11b and g standards to insure interoperability. The EZ-Go[®] is housed in a UV resistant and UL rated weatherproof enclosure with a nice aesthetic appearance and clean lines. It includes an integrated 14dBi high efficiency VPOL antenna for extended range.

With its advanced software, the EZ-Go[®] supports multiple operating modes, including; Client Bridge, Client Router, Access Point Router, Access Point + WDS and Point to Point.

The EZ-Go[®] comes complete with Cat5e rated POE (Power Over Ethernet) power inserter and 18VDC auto-ranging power supply. The corrosion resistant bracket system accommodates pole or wall mounting. The unit supports an optional external antenna connector.

FEATURES	BENEFITS
High Power 250mW Electronics and powerful 14dBi antenna. EIRP = 6.3W	Operation at long distances and up to 15 Mb/sec
Advanced e-zy.net Software	No driver needed. Easy configuration thru web interface and remotely. Multiple Operating Modes. Plug and Play installation. Antenna alignment utility. Bandwidth management. Data Logging and statistics graphing.
64 and 128bit WEP, WPA and WPA2 Encryption. 802.1x and RADIUS support.	Most powerful data security available
Seamless Roaming	Allows users to roam between access points without loss of connection
DHCP Client or Server	Simplifies network administration
MAC Address filtering	Ensures secure network connection in all operating modes
VOIP Friendly QOS	Quality Of Service mechanism to ensure good Voice Over IP performance
SNMP	Compatible with your favorite network management software
Power Over Ethernet (POE)	Antennas can be mounted up to 100meter (300') from the power source
EZ-Bridge™ Network Expansion	EZ-Go [®] are compatible with the EZ-Bridge™ wireless bridge systems and can be used to expand the network to multiple buildings

TECHNICAL SPECIFICATIONS

Data Rates

802.11g: 54 / 48 / 36 / 24 / 12 / 9 / 6 Mbps
802.11b: 11 / 5.5 / 2 / 1 Mbps

Standards

IEEE802.11b/g, 802.3, 802.3u

Power Requirements

Power Supply: 100-240VAC 50/60Hz
EZ-Go[®]: 18VDC/0.8A
Ave Power Consumption: 5W

Regulatory Certifications

FCC Part 15 / UL

RF Frequency Band

2400 ~ 2497 MHz

Media Access Protocol

Carrier Sense Multiple Access with Collision Avoidance (CSMA/CA)

Modulation Technology

Direct Sequence Spread Spectrum (DSSS)
802.11g: OFDM (64QAM, 16QAM, QPSK, BPSK)
802.11b: DSSS (CCK, DQPSK, DBPSK)

Operating Channels

11 for North America, 13 for Europe, 14 for Japan

Receive Sensitivity (Typical)

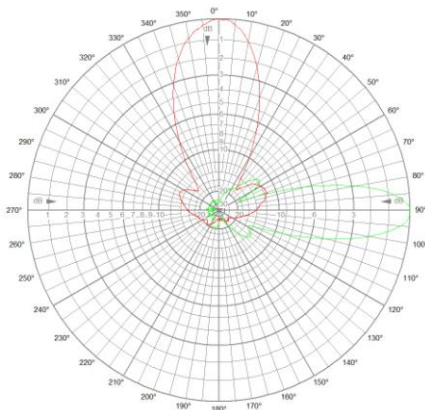
802.11g: -73 +2dBm @ 54Mbps
802.11b: -84 + 2dBm @ 11Mbps

Available Transmit Power

802.11g: 50, 100mW. EIRP = 2.5W
802.11b: 100, 150, 200, 250mW. EIRP = 6.3W

Notes:

- All shipments F.O.B. Draper, UT 84020
- EZ-Go[®] carries a 1 year warranty



EZ-Go-2 14dBi Antenna Pattern

Antenna

14dBi Panel Antenna, 35deg Az and 25deg El Beamwidth, >20dB front to back. Vertical Polarity

Network Topology

Ad-Hoc, Infrastructure

Operation Modes

AP Client , AP Client Router, Wireless Access Point, Wireless Router, WDS, AP+WDS, Universal Repeater

Interface

10/100Mbps RJ-45 LAN Port

IP Auto Configuration

DHCP Client, DHCP Server

Security

Password Protection, MAC Address Filtering, WEP/WPA encryption, Hide SSID in beacons, Layer 2 isolation

Management Configuration

Web-based configuration (HTTP)
Console configuration (SSH)
SNMP Protocol

Firmware Upgrade

Upgrade firmware via web browser

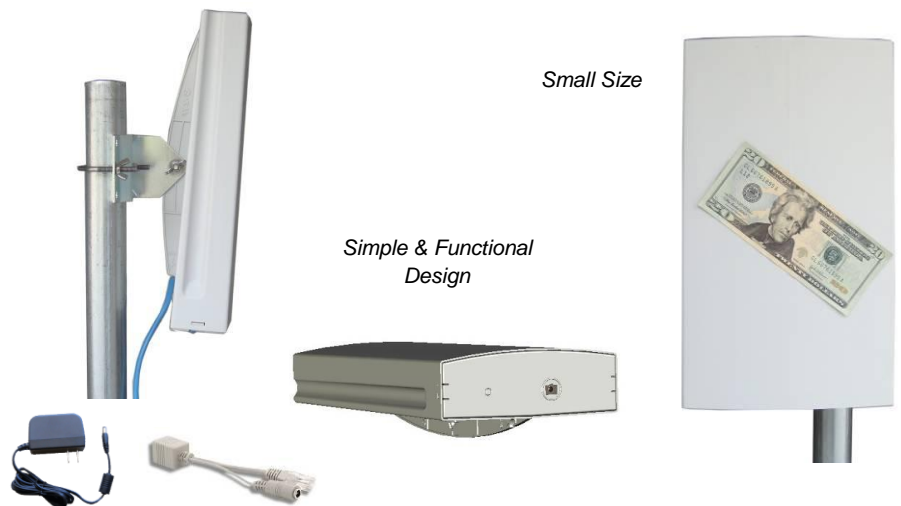
Antenna Physical Dimensions (L x W x D)

314mm x 187mm x 65mm
12.4" x 7.3" x 2.5"

Complete System Weight: 1.5 kg (3.3 lbs)

Temperature Range

Operating: -35°C to 60°C (-31°F to 140°F)
Storage: -40°C to 70°C (-40°F to 158°F)



Small Size

Simple & Functional Design